



INTERNATIONAL PERSPECTIVES ICAR 2022

CAROLINE EMOND IDF DIRECTOR GENERAL

OPENING REMARKS

- A world of disruptions, changes and uncertainties.
- Pressure on livestock production to be more sustainable.
- Food insecurity on the rise.

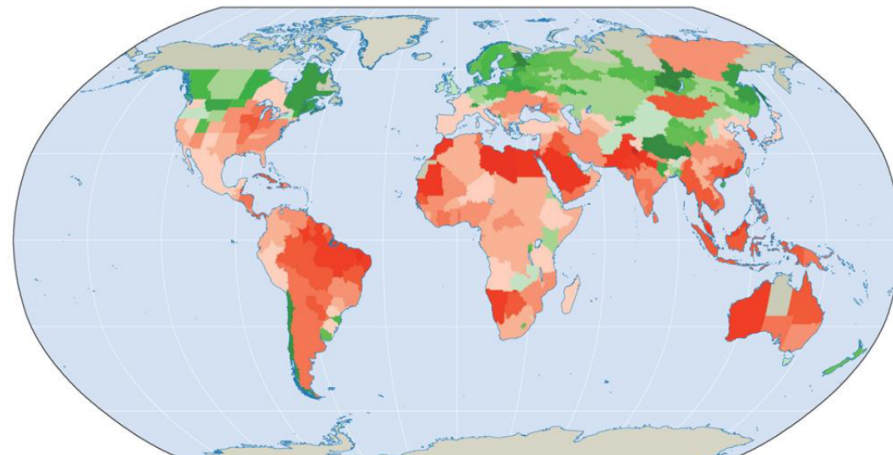


GLOBAL KEY DRIVERS: POPULATION GROWTH, CLIMATE CHANGE

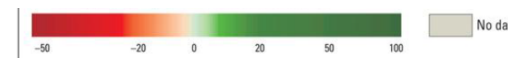
By 2050 >9 billion



Projected percentage in agricultural yields by 2050
given current agricultural practices and crop varieties



Percentage change in yield between present and 2050



Source: World Bank (Development Report 2010)

THE INITIATIVE AND ITS PRINCIPLES

www.PathwaysToDairyNetZero.org

PATHWAYS TO DAIRY NET ZERO DECLARATION

Across every dairy community. Throughout every continent. The global dairy sector is taking action.

Pathways to Dairy Net Zero, the first climate initiative of its kind in the world, will accelerate dairy's climate action by reducing the sector's greenhouse gas (GHG) emissions over the next 30 years.

It is driven by the global dairy sector and supported by leading scientific and research organizations.

AS A SUPPORTER OF PATHWAYS TO DAIRY NET ZERO, WE RECOGNIZE THAT:

- ✓ Dairy helps create sustainable food systems, ensuring high-quality nutrition for all
- ✓ There are opportunities for all to reduce greenhouse gas emissions because positive change is possible across all dairy systems and regions
- ✓ As a short-lived greenhouse gas, reducing methane emissions from livestock can be part of a climate solution
- ✓ Dairy already has the means in many regions to reduce a significant proportion of emissions by improving productivity and resource use efficiency
- ✓ Reducing emissions today will safeguard nutrition security, sustain a billion livelihoods for tomorrow and help secure a future for us all

WE SUPPORT PATHWAYS TO DAIRY NET ZERO BY:

1. Taking direct action on greenhouse gas mitigation, and/or
2. Supporting and promoting its principles

THE SIX PRINCIPLES OF PATHWAYS TO DAIRY NET ZERO ARE:

Mitigation

Continuing to improve production and process efficiency to further reduce the GHG emissions intensity of milk and dairy products.

GHG removals

Enhancing production practices that protect carbon sinks (soil, forests, grass and peatlands) and complement natural ecosystems.

Avoidance and adaptation

Improving practices such as feed, manure, fertilizer and energy management.

Insets and offsets

Identify and implement alternative, credible reduction options.

Measurement and monitoring

Measuring greenhouse gas emissions to plan mitigation and monitor progress.

Overall Support

Promoting the initiative and emphasizing the dairy sector's climate ambition.



MITIGATION



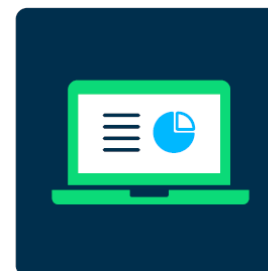
GREENHOUSE
GAS REMOVALS



AVOIDANCE
& ADAPTATION



INSETS & OFFSETS



MEASUREMENT
& MONITORING



OVERALL SUPPORT



UPCOMING REVISED LCA METHODOLOGY

Purpose of the methodology

Applying this attributional methodology enables

- The dairy industry to accelerate its journey to reduce GHG emissions across the value chain.
- Basic comparison of the Carbon Footprint between products in the same product category.
- Reporting of GHG emissions from the farming, processing and (now also) retail, use and end of life stages of the value chain (corporate or product reporting).
- Identification of hotspots to prioritize for targeted mitigation actions.
- Monitoring of improvements over time to appreciate and demonstrate progress.
- Determination of the impact of different mitigation options.



IDF METHODOLOGIES AND SUSTAINABLE PRACTICES

UPCOMING RELEASES

IDF Bulletin

MAY 2022

Eco-friendly and energy-saving dairy technologies



Campodoro biogas plant, Brazzale

IDF Bulletin

Autumn 2022

Ecosystem services from the dairy sector



GLOBAL KEY DRIVERS: DAIRY QUALITY AND SUSTAINABILITY

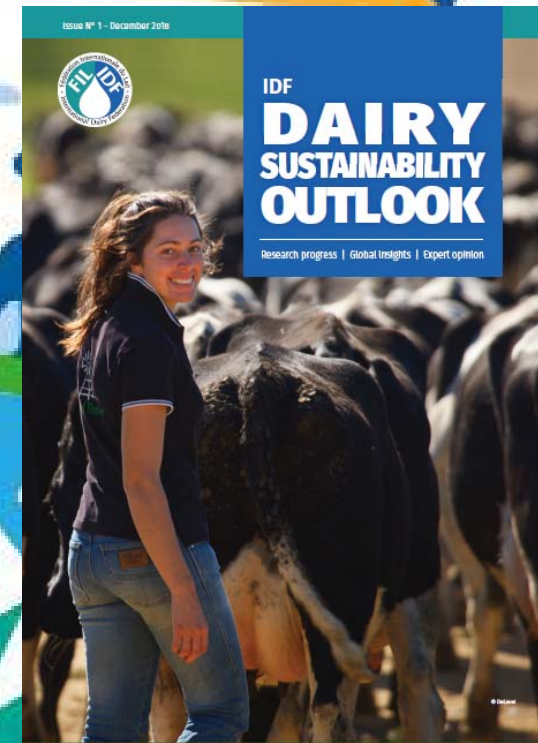
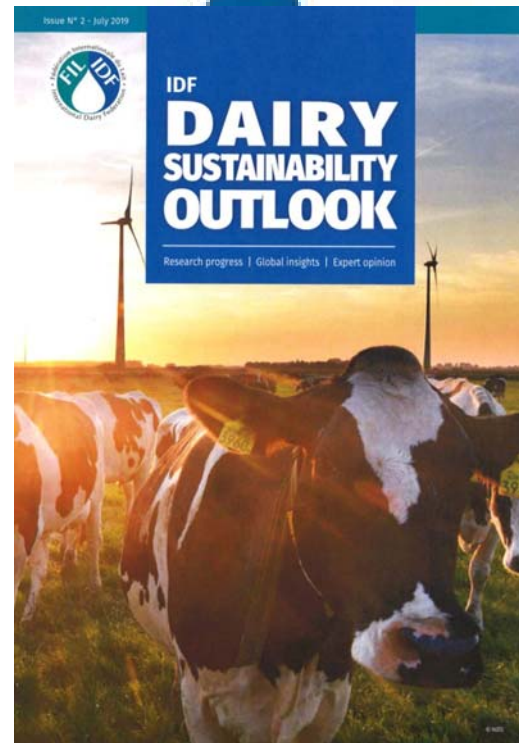
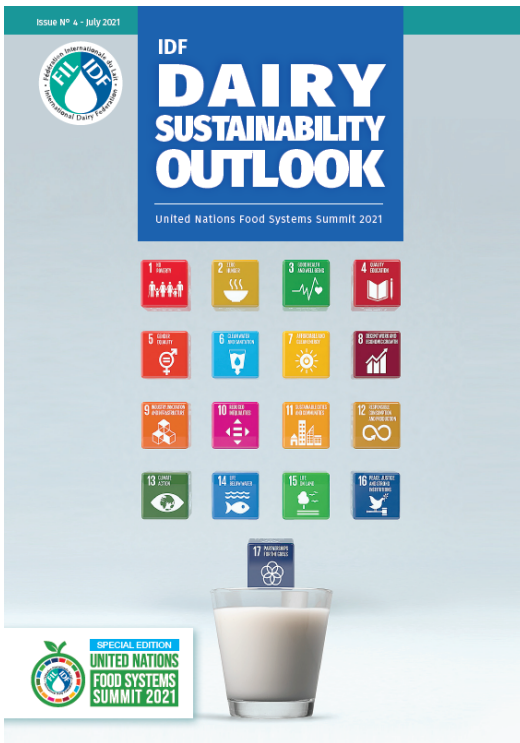
Food Safety & Quality



Sustainable farming, processing, distribution

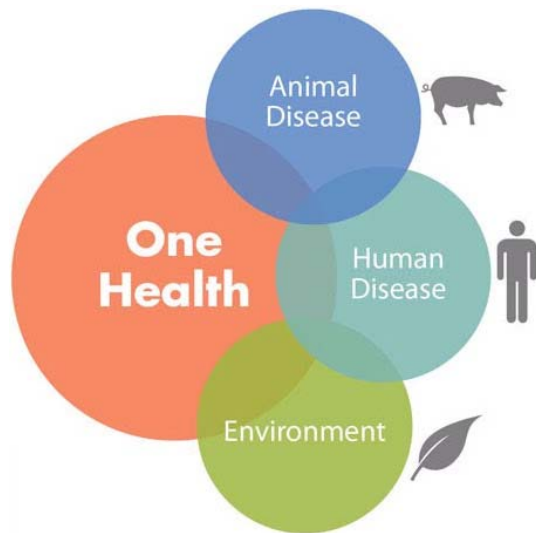


THE SERIES EXPLORES CASE STUDIES OF SUSTAINABLE PRACTICES & INNOVATIONS ACROSS THE DAIRY SECTOR



GLOBAL KEY DRIVERS: PRODUCTIVE AND HEALTHY CATTLE

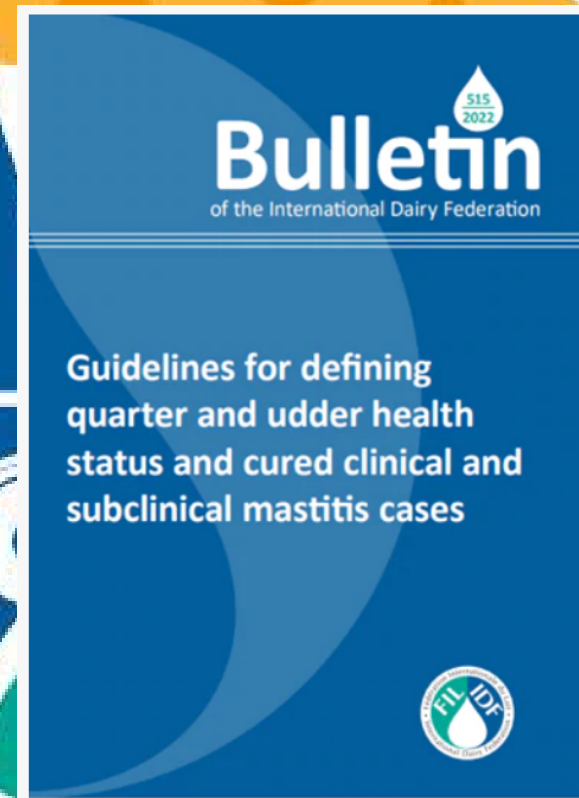
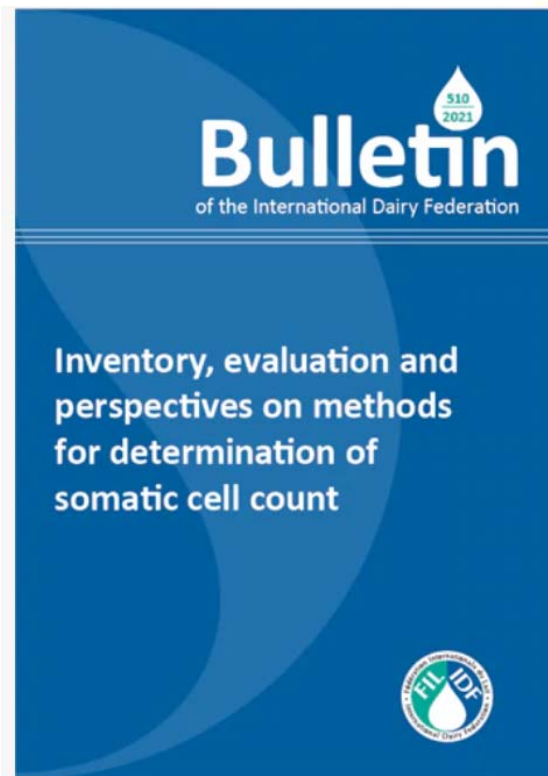
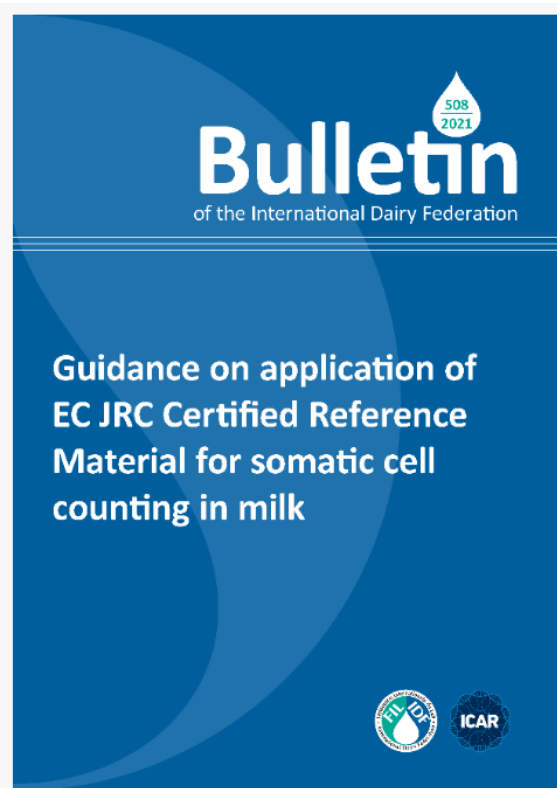
One Health



Animal Health and Welfare



RECENT PUBLICATIONS





ANNUAL REPORT 2020 – 2021

- Provides an overall picture of the performance of the Federation
- Showcases IDF's outstanding scientific and technical work as well as in the areas of representation, advocacy and communications
- Available for download on IDF website www.fil-idf.org

IDF Annual Report 2021



IDF DAIRY INNOVATION AWARDS BUILT-IN SUSTAINABILITY AND UN SDGS



IDF-WDS 2022

NEW DELHI, INDIA

- **Theme : Dairy for Nutrition & Livelihood**
- **Dates: 8 – 16 September 2022**
 - ✓ BUSINESS MEETINGS : 9-11 SEPTEMBER 2022
 - ✓ **WDS CONFERENCE** : 12-15 SEPTEMBER 2022
 - ✓ SOCIAL & TECHNICAL TOURS : 15-16 SEPTEMBER 2022
- **Venue:** India Expo Center, Greater Noida
National Capital Region (NCR), New Delhi
- **Tours**
 - **Social:** New Delhi, Agra & Jaipur
 - **Technical**
 - Visit to a typical Indian dairy farm
 - State-of-the-art dairy plant
 - Visit to Anand, Gujarat- The Milk Capital of India



2023

- 20th anniversary of collaboration ISO-IDF
- 60th anniversary of collaboration Codex-IDF
- 120th anniversary of IDF

IDF World Dairy Summit 2023 in Chicago!



HAPPY WORLD MILK DAY!





GLOBAL DAIRY EXPERTISE SINCE 1903

INTERNATIONAL DAIRY FEDERATION

70/B, Boulevard Auguste Reyers
1030 Brussels - Belgium

Tel: +32 2 325 67 40

Email: info@fil-idf.org

Fax: +32 2 325 67 41



www.fil-idf.org



[@FIL_IDF](https://twitter.com/FIL_IDF)



[international-dairy-federation](https://www.linkedin.com/company/international-dairy-federation)



[@internationaldairyfederation](https://www.facebook.com/internationaldairyfederation)